

Wall Mount Products

MINI-MAX

Mini-Max Wall Mount Enclosures are the perfect storage solution for today's demanding, space-constrained applications.

Convenient and flexible, these 19" EIA rack-mount enclosures allow you to manage and secure critical network wiring, hubs, concentrators, routers, patch panels, and audio/video equipment in a minimal amount of space. Offered in a variety of sizes (24 standard models) with door and ventilation options, Mini-Max delivers the perfect combination of form and functionality for virtually any application.

Features

- Available in 3 heights (12U, 20U and 26U), 1 width (21.50") and 2 depths (14" and 20")
- Multiple configuration options available, including solid or Plexiglas™ doors, and solid or vented sides
- Dual tapped and field reversible 10-32 and 12-24 mounting rails (1 set per cabinet)
- Choose from four colors: black, computer gray, light gray or royal blue

ACCESSORIES



Shelves



Rack-mount power strips



Cable management



110 CFM fan



Mini-Max Wall Mount Enclosure

Wall Mount Enclosures

	Order code	Sides	Door Type	VPO	Ext. Height	Usable Depth	Ext. Depth	HPO	Ext. Width
12U Cabinets	WCF192114PL	Vented	Plexiglas	21.00"	23.13"	14.00"	20.16"	19"	21.25"
	WCF192114PS	Solid							
	WCF192114SL	Vented	Solid	21.00"	23.13"	14.00"	20.16"	19"	21.25"
	WCF192114SS	Solid							
	WCF192120PL	Vented	Plexiglas	21.00"	23.13"	20.00"	26.16"	19"	21.25"
	WCF192120PS	Solid							
	WCF192120SL	Vented	Solid	21.00"	23.13"	20.00"	26.16"	19"	21.25"
	WCF192120SS	Solid							
20U Cabinets	WCF193514PL	Vented	Plexiglas	35.00"	37.13"	14.00"	20.16"	19"	21.25"
	WCF193514PS	Solid							
	WCF193514SL	Vented	Solid	35.00"	37.13"	14.00"	20.16"	19"	21.25"
	WCF193514SS	Solid							
	WCF193520PL	Vented	Plexiglas	35.00"	37.13"	20.00"	26.16"	19"	21.25"
	WCF193520PS	Solid							
	WCF193520SL	Vented	Solid	35.00"	37.13"	20.00"	26.16"	19"	21.25"
	WCF193520SS	Solid							
26U Cabinets	WCF194514PL	Vented	Plexiglas	45.50"	48.13"	14.00"	20.16"	19"	21.25"
	WCF194514PS	Solid							
	WCF194514SL	Vented	Solid	45.50"	48.13"	14.00"	20.16"	19"	21.25"
	WCF194514SS	Solid							
	WCF194520PL	Vented	Plexiglas	45.50"	48.13"	20.00"	26.16"	19"	21.25"
	WCF194520PS	Solid							
	WCF194520SL	Vented	Solid	45.50"	48.13"	20.00"	26.16"	19"	21.25"
	WCF194520SS	Solid							

All frames are available in the standard color offering M – Black, F – Computer Grey, P – Light Grey or E – Royal Blue

Wall Mount Enclosure Options and Accessories

GB190106	Buss bar, copper, Mini-Max, 19" long
WCF01	Mini-Max wall mount enclosure fan filter
WCF110	Fan, exhaust, 110CFM, 115V, 6.77" dia., 1.5" deep
WCRK21M	Wall enclosure universal mounting rail kit (pair), 21.00" VPS, 12U, black
WCRK35M	Wall enclosure universal mounting rail kit (pair), 35.00" VPS, 20U, black
WCRK45M	Wall enclosure universal mounting rail kit (pair), 45.00" VPS, 26U, black

Call APG at 800-274-7216 or visit us on the web at www.apgcases.com for more information.

APW – Accessories

APW PRODUCT ACCESSORIES

APW features a wide array of optional accessories for complete customization of your APW products.

For further information on APW options and accessories please consult your APW Sales Representative or our Customer Care Team.

Shelving options: Fixed, Sliding, Half-Depth, Full-Depth, Center Weight, Light/Medium/Heavy-Duty

Power options: Rack-mount power strips, vertical

plugmolds, PDU (power distribution units), 15/20/30 Amp, 120/220 Volt, Standard Plugs, Twist Locks

Cable management: Vertical and Horizontal Cable Management Bars, Horizontal Cable Management Panels, Cable Management Rings, Cable Management Top and Bottom Panels

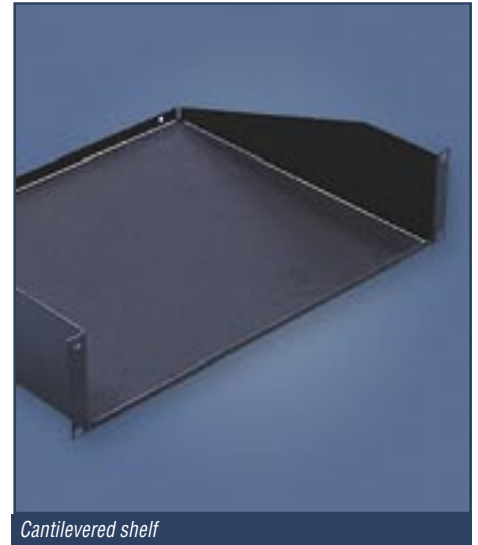
Cooling options: Top Fan Panels, Flat Fan Panels, Fan Trays, Optional Accessory Fans

Grounding options: Vertical Copper Grounding Bars and Ground Wire Kits (not available on all products)

Ordering information – descriptions and order codes – for the most popular accessories for our cabinet range is detailed over the next five pages.

Cantilevered Shelves – Front Mount Only

Order code	Description
CS1912S	19" Rack mountable cantilevered shelf, solid, 50lbs. capacity, 3.50" PS 2U, 12.50" deep
CS1912V	19" Rack mountable cantilevered shelf, vented 50lbs. capacity, 3.50" PS 2U, 12.50" deep
CS1914S	19" Rack mountable cantilevered shelf, solid, 50lbs. capacity, 3.50" PS 2U, 14.50" deep
CS1914V	19" Rack mountable cantilevered shelf, vented 50lbs. capacity, 3.50" PS 2U, 14.50" deep
CS1919S	19" Rack mountable cantilevered shelf, solid, 50lbs. capacity, 3.50" PS 2U, 19.00" deep
CS1919V	19" Rack mountable cantilevered shelf, vented 50lbs. capacity, 3.50" PS 2U, 19.00" deep
CS2312S	23" Rack mountable cantilevered shelf, solid, 50lbs. capacity, 3.50" PS 2U, 12.50" deep
CS2312V	23" Rack mountable cantilevered shelf, vented, 50lbs. capacity, 3.50" PS 2U, 12.50" deep
CS2314S	23" Rack mountable cantilevered shelf, solid 50lbs. capacity, 3.50" PS 2U, 14.50" deep
CS2314V	23" Rack mountable cantilevered shelf, vented 50lbs. capacity, 3.50" PS 2U, 14.50" deep
CS2412S	24" Rack mountable cantilevered shelf, solid, 50lbs. capacity, 3.50" PS 2U, 12.50" deep
CS2412V	24" Rack mountable cantilevered shelf, vented 50lbs. capacity, 3.50" PS 2U, 12.50" deep
CS2414S	24" Rack mountable cantilevered shelf, solid, 50lbs. capacity, 3.50" PS 2U, 14.50" deep
CS2414V	24" Rack mountable cantilevered shelf, vented 50lbs. capacity, 3.50" PS 2U, 14.50" deep



Cantilevered shelf

APW Cabinets – Accessories

RACK MOUNTS

Easily and neatly store your monitors or VCR/DVD equipment in APW's comprehensive line of rack mounts.

Available in a variety of styles that complement APW's cabinet, rack and console offering allowing you to complete your installation. Choose from 19" EIA rack-mount monitor mounts that store from 9" to 19" monitors or a variety of VCR recorders, or DVD rack-mounts.

Rack Mounts for Monitors and Time Lapse Recorders

Order code	Description
PD9RM-K	9" Dual monitor rack mount for monitors, black
SVCR-90-K	Rack mount for Sanyo 500 and 900 series recorders, black
SVCRM-20-K	Rack mount for Sanyo TLS-2000 and Sony 5000 recorders, black
SVCRM-70-K	Rack mount for Sanyo SRT-6000, 7072 and 7168 recorders, black
VCM-7509RM-K	Dual rack mount for Sanyo VMC-7509 9" color monitors, black



Dual 9" monitor mount



Large monitor mount



VCR/DVD rack-mounts

APW – Accessories

Cabinet Accessories

Order code	Description
1032KT	#10-32 Screw kit, include 20 x H100Z Screws
CAGEMKT	M6 Cage nut hardware kit, includes 20 each SCR103 M6 screws and C7988-M62-3F cage nuts and 1 x 600004 insertion tool
CAGEKT	#10-32 Cage nut hardware kit, includes 20 each H100Z screws and C7941-1032-3B cage nuts and 1 x 600004 insertion tool
CAGEMEGA	#10-32 Cage nut hardware kit, includes 100 each H100Z screws and C7941-1032-3B cage nuts and 1 x 600004 insertion tool
CLIPTKT	#10-32 Clip nut hardware kit, includes 20 each H110Z screws and C31758-1032-3B clip nuts
GANGKT	Joining kit for multibay enclosure configurations, includes 6 each H72 ¼" hex head bolts, T3SQUARE square nuts and 3' H121 foam tape
H100KT	#10-32 x 0.625" screw kit, bright zinc – pack of 100
H100MEGA	#10-32 x 0.625" screw kit, bright zinc – pack of 500
H100ZKT	#10-32 x 0.625" screw kit, black – pack of 100
H100ZMEGA	#10-32 x 0.625" screw kit, black – pack of 500
H290	Document holder
H99KT	#10-32 x 1.20" screw kit, bright zinc – pack of 100
H99ZKT	#10-32 x 1.20" screw kit, black – pack of 100
LIGHT	Interior light, white, 15 Watts, 20.0" long x 1.50" high x 2.25" deep, 6' power cord with NEMA 5-15P plug, on/off switch, 120V/15A
VCT11PK	11" Velcro cable ties – pack of 50
VCT8PK	8" Velcro cable ties – pack of 50

APW – Accessories

Power Offering

	Order code	Amps	Volts	No. of Receptacles	Cord Length	Plug Type	Dimensions Length x Depth x Width	Breaker Yes or No
Standard Vertical Mount Power Strip	EPS4015	15	125	6	15'	5-15P Standard	40" x 0.80" x 1.30"	No
	EPS6015	15	125	10		5-15P Standard	60" x 0.80" x 1.30"	No
	EPS6105T	15	125	10		L5-15P Twistlock	60" x 1.20" x 2.00"	No
	EPS6020	20	125	12		5-20P Standard	60" x 1.20" x 2.00"	No
	EPS6020T	20	125	12		L5-20P Twistlock	60" x 1.20" x 2.00"	No
	EPS4015I	15	125	6		5-15P Standard	40" x 0.80" x 1.30"	No
	EPS6015I	15	125	10		5-15P Standard	60" x 0.80" x 1.30"	No
	EPS6615	15	125	20		5-15P Standard	66" x 1.25" x 1.75"	Yes
	EPS6615T	15	125	20		L5-15P Twistlock	66" x 1.25" x 1.75"	Yes
	EPS6620	20	125	20		5-20P Standard	66" x 1.25" x 1.75"	Yes
	EPS6620T	20	125	20		L5-20P Twistlock	66" x 1.25" x 1.75"	Yes
Standard 19" Rack Mount Power Strip	EPS1620	20	125	6	15'	5-20P Standard	1.75" x 5" x 19"	No
	EPS1620T	20	125	6		L5-20P Twistlock	1.75" x 5" x 19"	No
	EPS20RM	20	125	6		5-20P Standard	1.75" x 5" x 19"	Yes
	EPS20RMS	20	125	6		5-20P Standard	1.75" x 5" x 19"	Yes
	EPS20RMT	20	125	6		L5-20P Twistlock	1.75" x 5" x 19"	Yes
	EPS15RXS	15	125	10		5-20P Standard	1.75" x 5" x 19"	Yes
	EPS15RMS	15	125	6		5-20P Standard	1.75" x 5" x 19"	Yes
	EPS15RDS	15	125	8		5-20P Standard	1.75" x 5" x 19"	Yes
PDU (Power Distribution Unit) - 19" Rack Mount	ED12020	20	120	9	15'	L5-20P Twistlock	1.75" x 3.50" x 19"	Yes
	ED12030	30	120	9		L5-30P Twistlock	1.75" x 3.50" x 19"	Yes
	ED22020	20	240	9		L6-20P Twistlock	1.75" x 3.50" x 19"	Yes
	ED22030	30	240	9		L6-30P Twistlock	1.75" x 3.50" x 19"	Yes
	ED122030	30	240	7		L6-30P Twistlock	1.75" x 3.50" x 19"	Yes
	ED12030M	30	120	14		L5-30P Twistlock	1.75" x 7.00" x 19"	Yes
	ED22030M	30	240	14		L6-30P Twistlock	1.75" x 7.00" x 19"	Yes
	EI22030M	30	240	20		L6-30P Twistlock	1.75" x 7.00" x 19"	Yes



Rack-mount power strips



Vertical plugmolds